



Green Furniture Concept



# Leaf Lamp

Acoustic Decorative Lighting



**Green Furniture Concept** is a socially responsible company with facilities in Europe and North America, creating unique public spaces with flexible and functional designs that use local materials and manufacturing.

---

## Summary

---

The Leaf Lamp is an award-winning ambient lighting solution made entirely of natural materials. With its soft organic shape, this light fixture is meant to mimic the design principles of Mother Nature. It has a unique ability to bring the calming feeling of the outdoors to any indoor environment.

The foliage consists of thin, unbleached wool felt leaves that offer both flameproof and sound-absorbing qualities. The densely positioned wool leaves create a labyrinth that traps the sound, considerably reducing echoes in a loud public space. Acousticians rate the leaf lamps in Class A for the most sensitive sound frequencies in the ear and Class B for frequencies outside this range.

The wool leaves are attached to birch branches, which are turned slightly differently in each lamp to ensure a unique and organic foliage configuration for every environment.

There are 3 standard formats of displaying the leaf lamp. The clusters of wool can either be suspended from a central rope pendant or fastened to a fully-grown tree trunk on a heavy-duty metallic base, which does not require floor bolting. For smaller rooms, the branches can also be attached to an elegant wooden pole standing on a tripod pedestal.

Leaf Lamps are lit from the center with a single LED or induction bulb. A warm color tone is recommended for the bulb.

The Designer of the Leaf Lamp series, Peter Schumacher, was awarded the 1st prize for this product at the Green Furniture Award, in 2010.

---

## Designer

---

*Peter Schumacher, designer of "Leaf Lamp", studied Architecture at the University of Adelaide and Industrial Design at the University of South Australia. After graduation he worked for a number of manufacturing companies and design consultancies in Sydney and Adelaide.*

*In 1999 he took up a lecturing position in the Design School at the University of South Australia where he is currently the Program Director for the Industrial Design Degree.*

*Between teaching and studying for his PhD on Pictorial Assembly Instructions, he designs and builds furniture exploring materials, processes and construction techniques.*

*In 2002, he received a Bronze Leaf in the International Furniture Design Competition in Asahikawa, Japan for 'Flight Screen' and was shortlisted in the 2005 competition.*

*His furniture work has been exhibited in Adelaide, Milan and Matra Herford, Germany.*

**Peter Schumacher**  
Designer  
Leaf Lamp Series



## Materials & Maintenance

**The tree trunk and branches** are made of solid birch and have an untreated surface.

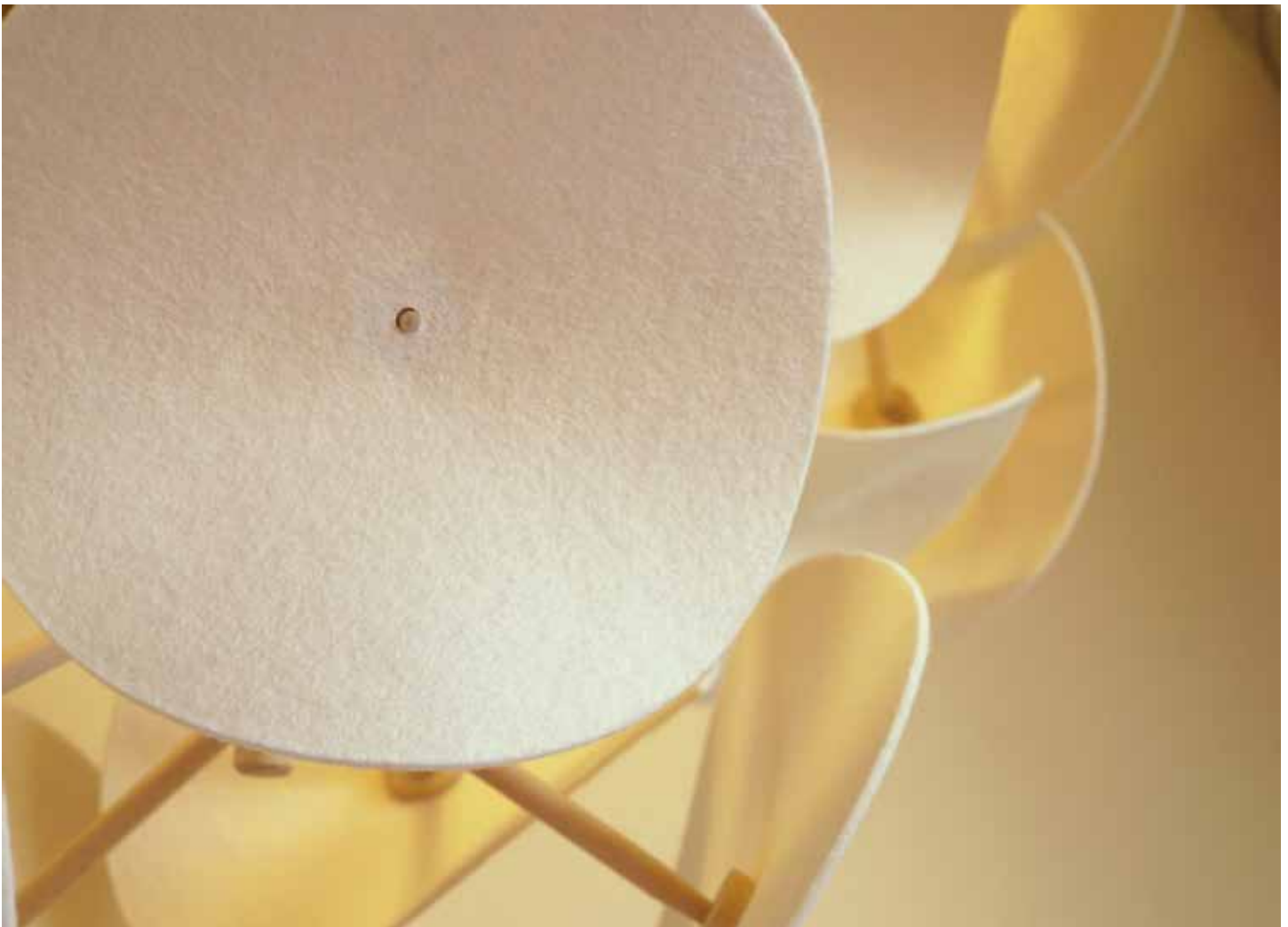
**The foliage** consists of thin unbleached wool felt leaves, a 100% natural wool mix with sound-absorbing qualities.

**The tree's base plate** is made of powder coated steel.

**The light source** on each lamp is designed as a E27-socket outfitted for a maximum capacity of 25W. A low energy bulb is recommended (not included). One bulb used in the 32" and 51" pendants, 4 bulbs are used in the in 90" tree, and 6 bulbs in the 120" tree.

The Leaf Lamp, with its open structure, does not attract and accumulate bugs or flies. The wool itself repels dust and the colour of the unbleached wool leaf makes dust invisible, which generates longer intervals between cleaning.

When the need for dusting arises, the large scale method (e.g. shopping mall) is to use a high pressure air blower. One whole lamp can be efficiently cleaned in 10-20 seconds from a point below the lamp. The small scale method is to use a feather duster.



## Why Green

The Leaf Lamp foliage is made of unbleached wool felt, a 100% natural mix

**100%  
NATURAL**



The branches and the trunk are made of FSC-marked wood

The branches can be glued together with bone glue, a 100% natural product

**100%  
NATURAL**

The innermost branches are screwed into the trunk, and can easily be unassembled and recycled



The Leaf Lamp's suspension cord is made of unbleached cotton rope, free from PVCs, and spliced with cotton thread



The product is CUL-marked and is intended to be lit with an LED or low energy bulb.



Wool does not burn, not even if it will be exposed to an open flame. Solid wood is not considered to be flammable in fire exposure contexts



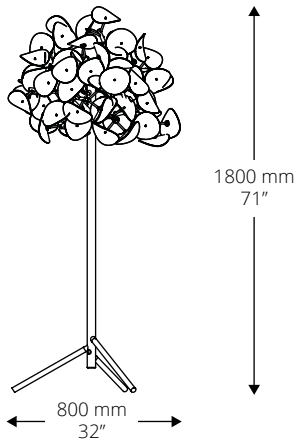
Each Leaf Lamp comes unassembled in a flat package, for reduced environmental effect



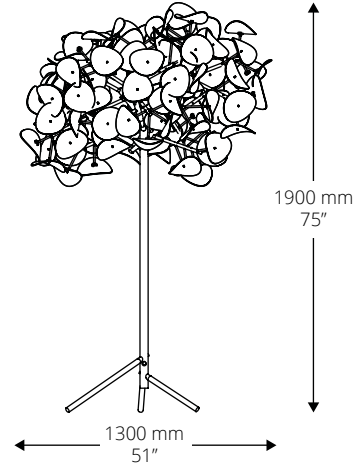
A tree is planted in the Green Furniture Plantation for every piece of furniture sold by GFC



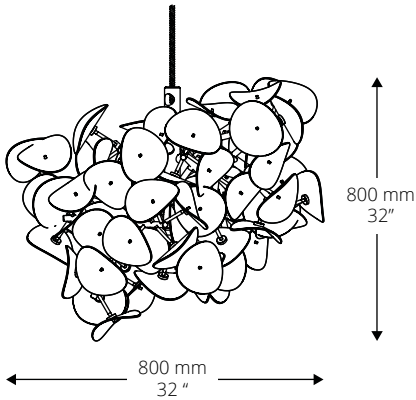
# Measurements



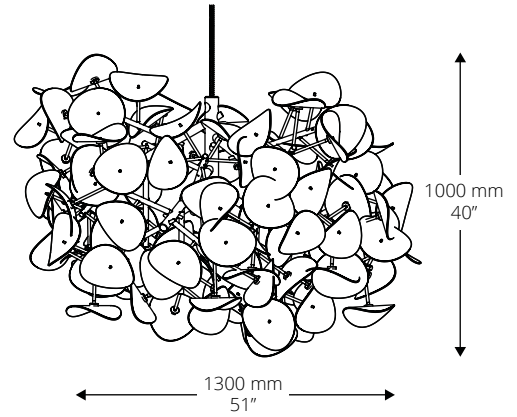
Leaf Lamp 32" Floor Lamp



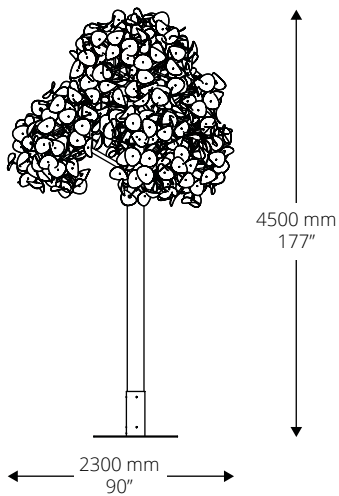
Leaf Lamp 51" Floor Lamp



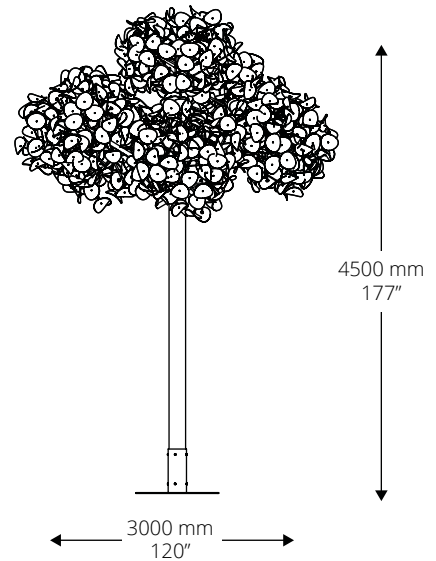
Leaf Lamp 32" Pendant



Leaf Lamp 51" Pendant



Leaf Lamp 90" Tree



Leaf Lamp 120" Tree

# Leaf Lamp Variations



Leaf Lamp 32" Floor Lamp



Leaf Lamp 51" Floor Lamp



Leaf Lamp 32" Pendant



Leaf Lamp 51" Pendant



Leaf Lamp 90" Tree



Leaf Lamp 120" Tree

# Leaf Lamp Series Price List



Item	Description	Min. Qty	Dimensions (Inches)			Dimensions (mm)			Price
			W	D	H	W	D	H	
LLF032	Leaf Lamp 32" Floor Lamp	3	32"	32"	71"	800	800	1800	\$1,860
LLF051	Leaf Lamp 51" Floor Lamp	3	51"	51"	75"	1300	1300	1900	\$2,340



Item	Description	Min. Qty	Dimensions (Inches)			Dimensions (mm)			Price
			W	D	H	W	D	H	
LLP032	Leaf Lamp 32" Pendant	3	32"	32"	32"	800	800	800	\$1,690
LLP051	Leaf Lamp 51" Pendant	3	51"	51"	51"	1300	1300	1300	\$2,170



Item	Description	Min. Qty	Dimensions (Inches)			Dimensions (mm)			Price
			W	D	H	W	D	H	
LLT090	Leaf Lamp 90" Tree	1	90"	90"	177"	2300	2300	4500	\$12,670
LLT120	Leaf Lamp 120" Tree	1	120"	120"	177"	3000	3000	4500	\$17,740

*\*Price does not include metal base*



Item	Description	Min. Qty	Dimensions (Inches)			Dimensions (mm)			Price
			W	D	H	W	D	H	
LLB001	Tree Base*	1	30"	30"	16"	750	750	400	\$850

*\*Small base must be bolted to the floor*



Item	Description	Min. Qty	Dimensions (Inches)			Dimensions (mm)			Price
			W	D	H	W	D	H	
LLB002	Tree Base Plate	1	60"	60"	5/16"	1500	1500	8	\$850





# G

## Green Furniture Concept

---

The Leaf Lamp Series is manufactured with 100% commitment to environmental sustainability.

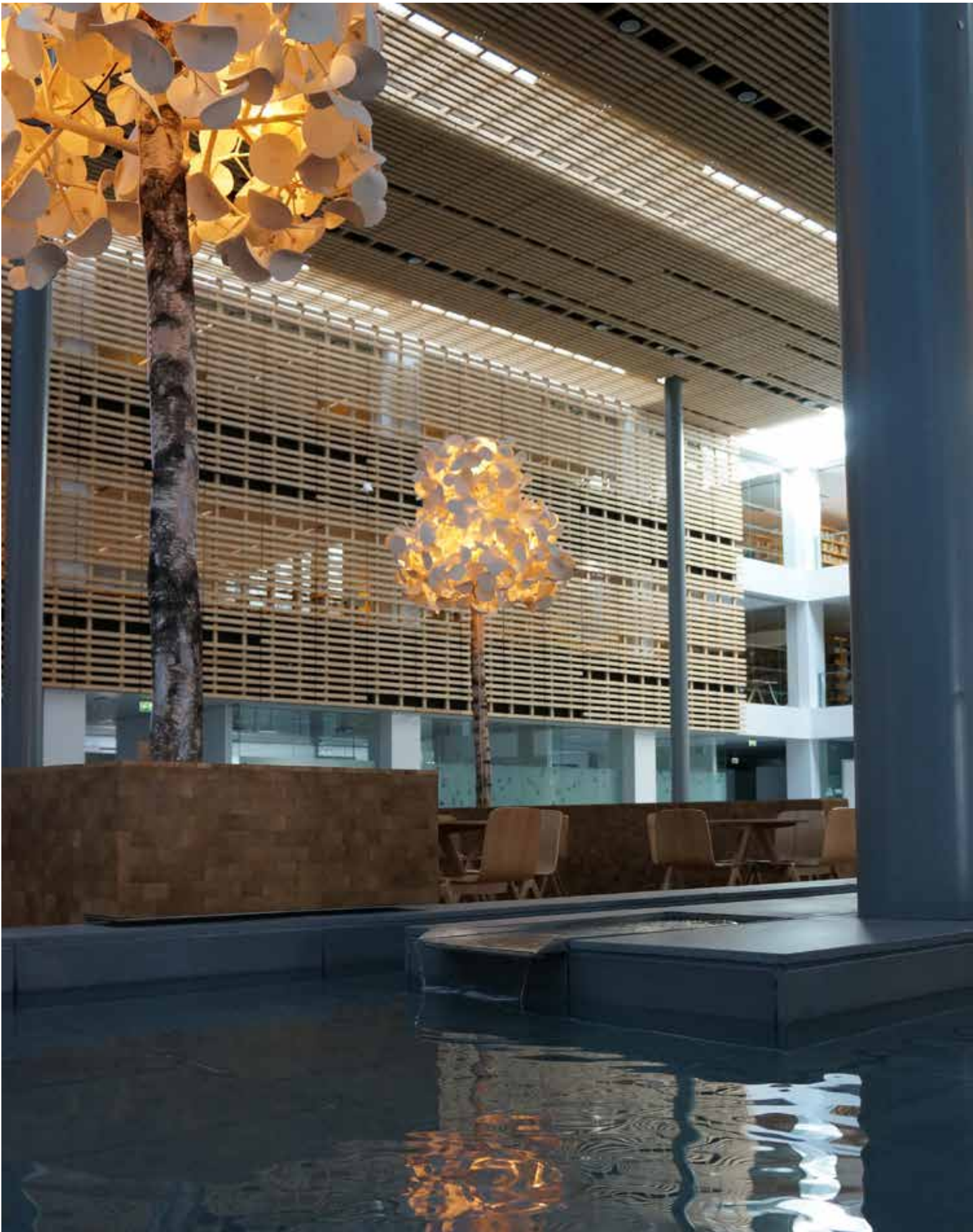
---

*Bringing the outdoors indoors*











Green Furniture Concept



---

[americas@GreenFurnitureConcept.com](mailto:americas@GreenFurnitureConcept.com)  
+1 (514) 342-6800